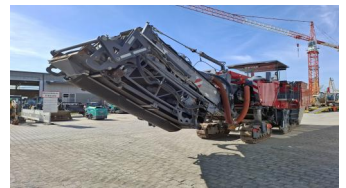


ID: 18551

WIRTGEN STRAßENFRÄSEN W 250I

PRET FARA TVA: AUF ANFRAGE



DATELE MASINII	
denumirea masini	freza de strada
Tipul	W 250i
producator	Wirtgen
anul de fabricatie	2017
ore de functionare	9128
greutate [to]	45

MOTOR	
producator	Cummins + Cummins
motor [tip]	QSX15 600 + QSL9 380
capacitatea motorului [kW]	447 + 283
emisii standard	Tier4 final (mit Ad-Blue)
EPA plac?	✓
Filtru diesel disponibil	✓

ECHIPAMENT			
Tambur de frezat	2200	adincimea frezei [mm]	330
FCS - sistem flexibil de t?iere	✓	Fräswalzendrehvorrichtung	✓
band?	✓	Absauganlage	✓
Sistemul de extrac?ie VCS	✓	LEVEL PRO	✓
Senzor de panta	✓	Senzori de m?surare a distan?ei (cilindri)	✓
Masina de spalat cu presiune	✓	compresor	✓

ALTE

Fräswalze: #2309362 FB2200 HT22 LA18 FCS